




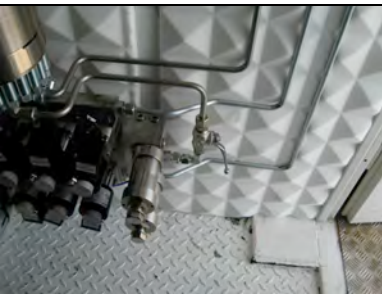


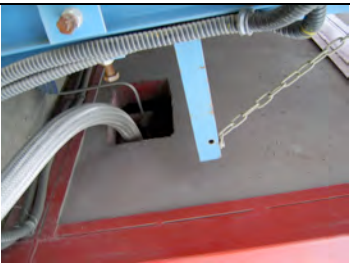
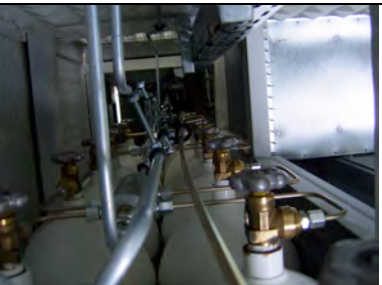
	<p>Former System Not allowed to be used any more</p>		<p>ISUP SGS System WEH TK 16 / TK 17 or Steubli</p>
	<p>Former System manual stop after flow rate is low on the display</p>		<p>New System automatic stop when pressure is reached or the flow rate is below a certain limit</p>
	<p>Former System Emergency coupling is outside of the dispenser</p>		<p>New System emergency coupling is integrated in the dispenser</p>

	<p>Former System coupling between piping and the hose outside of the dispenser</p>		<p>New System All parts are integrated in the dispenser</p>
---	--	--	---

Compressor

	<p>Former System outside block valve to disconnect the gas line</p>		<p>New system All valves are integrated in the SGS container</p>
---	---	--	--

	<p>Former System One three-bank system without function - the pressures in all banks are the same</p>		<p>New System new multi-functional block valve, regulating and monitoring the filling of the storage tank and the filling of the vehicles</p>
--	---	---	---

	<p>Former System unprotected Pipeline between store and compressor</p>		<p>New System all piping is integrated in the SGS container</p>
---	--	--	---



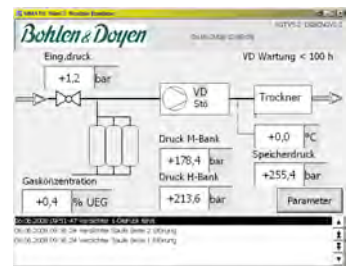
Former system drying system in gas entrance



New system Highly efficient high pressure drying system



Former System All important information is on single displays in the compressor room



New System All important information is on the display in the switchboard



Former system



New system